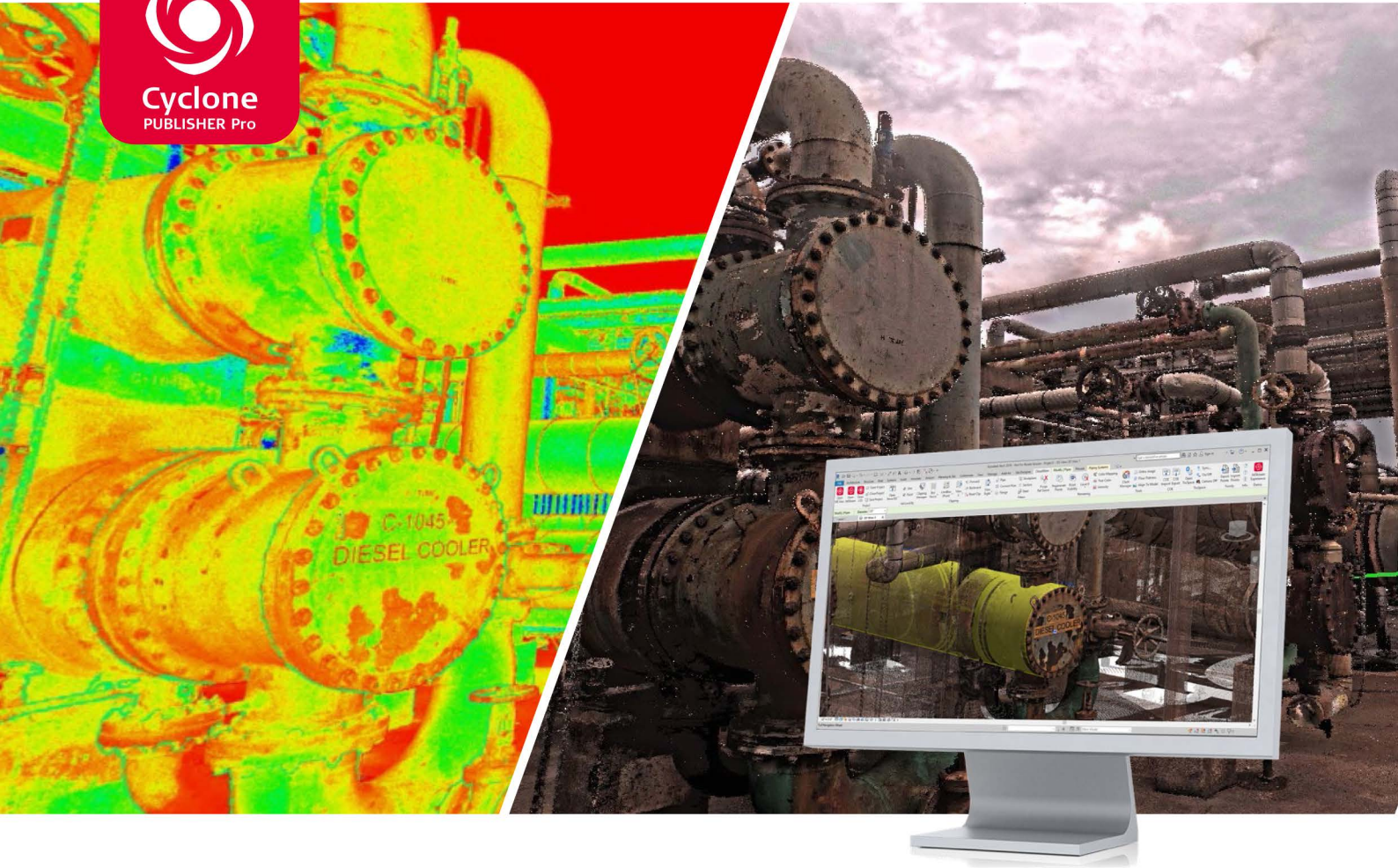


# Leica Cyclone PUBLISHER Pro

## Universal access to your digital reality data



### Flexible

Work with your data across the entire Leica Geosystems High-Definition Surveying (HDS) software product line. Leica Cyclone PUBLISHER Pro creates files that can be consumed in Cyclone and in the JetStream, TruView and CloudWorx families giving you total flexibility to create the deliverables you and your clients need.



### Simple

With a single licence, users can work across the entire HDS software product portfolio. Cyclone PUBLISHER Pro enables simple data access and a streamlined user experience via the LGS file, Leica Geosystems universal digital reality file, letting you access your project data in any software with a single publish.



### Universal

With Cyclone PUBLISHER Pro you can work with all of Leica Geosystems' formats for downstream consumption and deliverable creation. Publish JSV, TVG, LGS, RCP and LAS files in addition to all standard point formats available from Cyclone and Cyclone REGISTER 360.



**RPG Squarefoot Solutions**

(800) 521-6319

[www.rpg.com](http://www.rpg.com)

[info@rpg.com](mailto:info@rpg.com)



# The Pro Workflow

Prepare – Manage – Deliver



CONTENT PUBLISHED	CYCLONE TRUVIEW PUBLISHER	CYCLONE JETSTREAM PUBLISHER	CYCLONE PUBLISHER PRO	CYCLONE MODEL VR PUBLISHER
TruView Local dataset	♦		♦	
JetStream Enterprise Project		♦	♦	
TVG file	♦		♦	
JSV file (Published from JetStream Enterprise or Cyclone REGISTER 360)		♦	♦	
CVR file				♦
LGS file			♦	
LAS file			♦	
RCP file			♦	
Pano image as EXR & JPG			♦	
Project name	♦	♦	♦	
Project creation date	♦	♦	♦	
Project creator info	♦	♦	♦	
Project stats metadata	♦	♦	♦	
SiteMap(s)	♦	♦	♦	
Control	♦	♦	♦	
Setups + Metadata	♦	♦	♦	
RGB pano image layer <sup>1</sup>	♦	♦	♦	
HDR pano image layer <sup>1</sup>	♦	♦	♦	
Intensity hue pano image layer <sup>1</sup>	♦	♦	♦	
Intensity grayscale pano image layer <sup>1</sup>	♦	♦	♦	
IR pano image layer + Temps <sup>2</sup>			♦	
Multi-layer pano image			♦	
Model pano layer <sup>3</sup>	♦		♦	
Pano depthmap	♦		♦	
3D point cloud RGB attributes		♦	♦	
3D point cloud intensity hue attributes		♦	♦	
3D point cloud grayscale attributes		♦	♦	
3D point cloud HDR attributes <sup>4</sup>		♦	♦	
UCS'		♦	♦	
Clips		♦	♦	
GeoTags + Metadata	♦		♦	
Image assets	♦		♦	
Video assets	♦		♦	
Audio assets	♦		♦	
PDF assets	♦	♦	♦	

1 - Cyclone TruView PUBLISHER only supports publishing one layer per project.

2 - Also supported publishing directly to TruView Cloud, no PUBLISHER licence required.

3 - Model geometry is burned onto whichever image layer is selected for publishing.

4 - Point cloud HDR attributes are only supported from HDR data from the RTC360 and BLK360 and viewable only in JetStream Viewer.