

MUTOH ECO-SOLVENT PRINTER

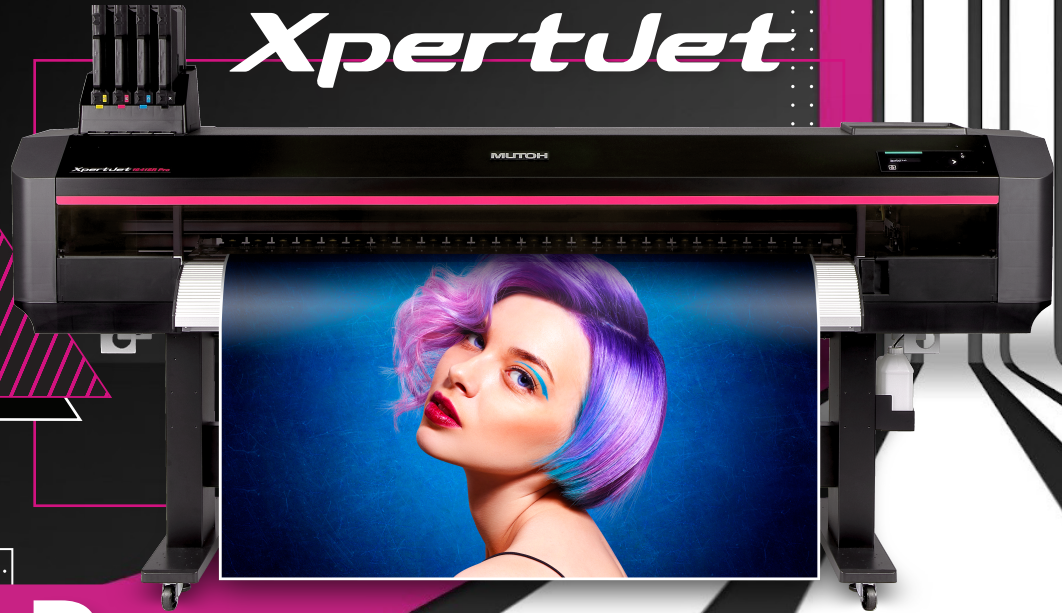
XpertJet

Powered by

VerteLith

AccuFINE
MUTOH Print Heads

MS41
Eco-Solvent
Inks
CMYK



1641SR Pro

BUILT FOR PROFESSIONALS

The **MUTOH XpertJet 1641SR Pro** 64" Eco-Solvent single head, 4-color (CMYK) printer, builds upon MUTOH's made in Japan reputation and delivers superior print quality and outstanding speeds at an affordable price. It is powered by MUTOH's new genuine **VerteLith™ RIP Software**, bundled with FlexiDESIGNER MUTOH Edition 21, a \$2,199.00 value. VerteLith RIP optimizes all of the capabilities the XPJ-1641SR Pro has to offer and produces the best-possible gradients, skin tones and vivid colors. This printer features MUTOH's new **AccuFINE Print Head**, which achieves best-in-class dot placement accuracy and an increased nozzle row length for 35% faster print speeds. The XPJ-1641SR Pro is paired with MUTOH's GREENGUARD Gold certified MS41 Eco-Solvent ink, suitable for use in sensitive environments such as hospitals, child care facilities and more, all while providing users a larger color gamut, outstanding durability, and improved dot gain.



WRAPS



SIGNAGE



WINDOW VINYL



DECALS

MUTOH

XpertJet 1641SR Pro

NEW VERTELITH
RIP SOFTWARE

NEW MUTOH
ACCUFINE
PRINT HEAD

I-SCREEN
OPTIMIZING

AUTOMATIC
ALIGNMENTS

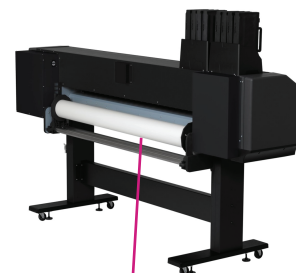
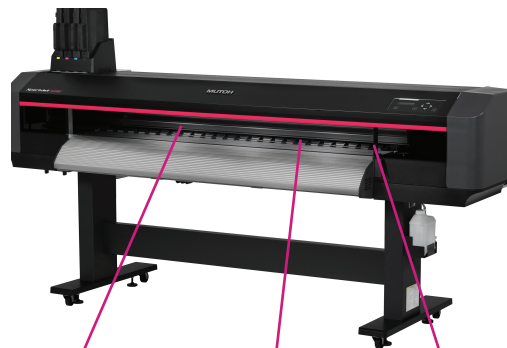
INTERNAL
LED LIGHTING

www.MUTOH.com | 1-800-99MUTOH



POWERED BY VERTELITH™ RIP SOFTWARE

MUTOH'S GENUINE RIP SOFTWARE BUNDLED WITH FLEXIDESIGNER MUTOH EDITION 21



Internal LED Lighting



AccuFine print head



Multi-stage pressure mechanism



Media Flange for improved handling

MUTOH's genuine VerteLith RIP software bundled with FlexiDESIGNER MUTOH Edition 21 optimizes the XPJ-1641SR Pro through these key features:

- Auto-population of named Pantone coated/uncoated spot colors.
- MUTOH Clear Tone half tone technology.
- MUTOH CMYK wide color gamut ICC profile.
- Automated layout processing and printing.
- Soft proof.
- "What-you-see-is-what-you-get" RIP preview.

- FlexiDESIGNER MUTOH Edition 21.
- Tab customization.
- Color management function.
- Finishing bleed processing function.
- Printing log function.

XPJ-1641SR Pro printer features include:

- New extra-long piezo Accufine print head increases productivity and improves the accuracy of dot placement by 20% over the previous print head.
- i-screen technology reduces banding.
- DropMaster2 automatically calibrates

- bi-directional alignments, saving time and reducing adjustment variations.
- Nozzle Area Select uses blocks of active nozzles to temporarily print if clogged nozzles fail to recover.
- Feed Master sensor allows for automatic feed adjustments.
- Media Tracker prints a barcode prior to removing media and when media is loaded again, recognizes the amount remaining.

XPERTJET 1641SR Pro SPECIFICATIONS

Printing systems	Drop-on-demand Micro Piezo Inkjet Technology
Print head height	Four-level adjustment: 1.5mm, 2.0mm, 2.5mm, 4.0mm
Print head	1
Max print resolution	1200x1200 dpi
Print modes	1200/900/600/300 dpi
Media width	64"
Media capacity	ø 5.9" dia / 2" & 3" cores / Roll media 66lbs or less
Max media thickness	Low1 0.3mm, Low2 0.8mm, Mid. 1.3mm, High 2.8mm
Max printable width	64 in
Height adjustment	Automatic
RIP software	VerteLith™, bundled with FlexiDESIGNER MUTOH Edition 21

Ink	Type	MS41 Eco-Solvent ink
	Ink Set	4 colors (C, M, Y, K)
	Volume	300 ml/1L ink bags
	No. of slots	4
Interface		Gigabit-Ethernet (1000BASE-T)
Power Requirements		AC 100-120V± 10%, 50/60Hz ± 1Hz
Printable Environment		Temperature: 68-89.6°F Humidity: 40-60%RH (non condensing) Rec. environment: Temperature: 71.6-86°F
Power Consumption		Main: Operation status 77W or less Standby: 52W or less
Dimensions (WxDxH)		Printer including stand: 108.26"x35.23"x56.22" cover closed
Weight		Body: 313lb Stand: 70.54lb